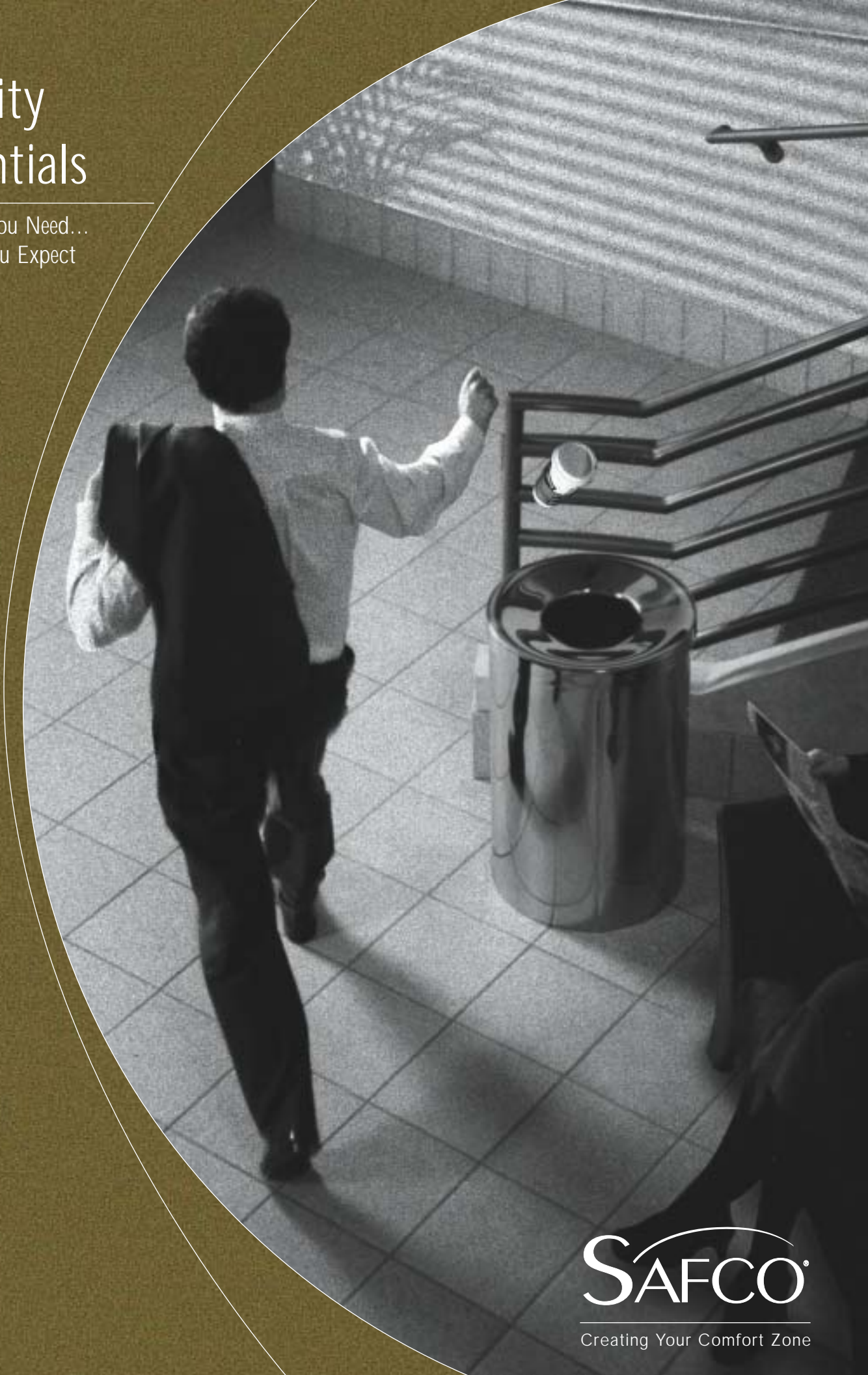


# Facility Essentials

Product You Need...  
Quality You Expect



**SAFCO**

Creating Your Comfort Zone

# Products You Need, Quality You Expect

Dear Safco Customer:

What do people want most in their working environment?

At Safco, we believe that comfort is the main ingredient to providing a satisfying and productive work experience. Comfort can mean different things to different people. It can mean the individualized comfort that comes from a well-designed, finely crafted chair. It can be the satisfaction you feel from having the perfect storage unit to help you stay organized. Or it can simply be the sense of well being you get from using the correct ergonomic wrist support system designed to keep you comfortable and safe all day...every day.

Safco was founded over 35 years ago with a small offering of corrugated storage products designed for use in offices. Every year since then, we have added high quality, innovative products to our line and backed them with the best service in the industry. Today, we are proud to offer over 2000 premier products that have been designed to meet specific needs in all areas of the workplace.

Our Facility Essentials catalog addresses the products you need to keep your facility running smoothly. From our TaskMaster® Ergonomic Seating group to back support belts and safety vests to a wide selection of task oriented hand trucks, we know how important it is to provide a comfortable, healthy and safe work setting for everyone. And to encourage a cleaner, neater environment, we offer waste collection systems in fiberglass, steel, wood and plastic to meet every need. From building entrances and lobbies to warehouse and loading docks, Safco offers the right solutions to help you provide your employees with a cleaner, safer, healthier and more comfortable place to work.

Facility Essentials is one of five Safco catalogs being offered this year. We invite you to request a copy of our Seating Solutions, Workplace Organization, Personal Comfort and Art & Engineering catalogs. As you browse through these books, I'm sure you'll see how we've dedicated ourselves to "Creating Your Comfort Zone" throughout the workplace.

Sincerely,



Dan Zdon  
General Manager



# Table of Contents

Page 4-5 Industrial Seating



Page 6-7 Hand Trucks



Page 10-11 Safety Apparel/Bins & Boxes



Page 8-9 Shelving/Lockers



Page 12-18 Waste Receptacles





# Industrial Seating

## Task Master® Industrial Series

With an overall height of 17" to 35", the ergonomically designed Industrial Series provides 8" (200mm) of pneumatic lift and an additional 10" with our Wave Tube Extension. This patented design enables workers of any size to adjust the height of the chair to fit the task in minutes... without tools. Each features a 5-leg, 26" dia. tubular steel base with 2½" high-impact nylon glides for safety and stability. Sturdy, ergonomically correct, polypropylene footrests mount securely to base. Seats and backs are contoured to promote good posture and covered with Black microcellular, self-skinning polyurethane foam for comfort. 360° swivel. Meets or exceeds ANSI/BIFMA standards. Patent #5,836,555 and Des. 381,823. Assembly required.

### A. Deluxe Industrial Chairs

Paddle lever controls 10° seat tilt and 22° backrest tilt. Ergo knob controls 5" backrest height adjustment. Ergonomically correct oversized seat and back are contoured to promote good posture. Includes high, mid and low-rung footrests. 2½" seat cushion depth. Assembly required.

### B. Utility Industrial Chairs

Paddle lever control provides 22° backrest tilt. Ergo knob controls 5" backrest height adjustment. Includes high and low-rung footrests. 2½" seat cushion depth. Assembly required.

### C. Economy Industrial Chairs

Ergo knob controls for 3" backrest depth and 3" backrest height adjustment. Includes one low-rung footrest. 2" seat cushion depth. Assembly required.

Description	Black	Dia. x H	Seat W x D	Back W x H
A. Deluxe	5120	26 x 17 to 35"	18½ x 17"	15¾ x 12"
B. Utility	5118	26 x 17 to 35"	18½ x 17"	14½ x 9"
C. Economy	5117	26 x 17 to 35"	16¼ x 16¼"	14½ x 9"

## Task Master® Workbench Height Series

Our Operational Chairs are designed to be used in workspaces requiring less height and flexibility than our Industrial Series. They feature an overall height range of 19" to 27" and an 8" (200mm) pneumatic lift as well as a 5-star, 25" dia. nylon base, 3-piece telescoping dust cover and 2" high-impact nylon glides. Includes 20" dia. chrome-plated footring. Black microcellular, self-skinning polyurethane foam seat and back. Contoured, oversized seat design, backrest tilt and height adjustments make these chairs adaptable to your exact height and job requirements. All chairs swivel 360°. Meets or exceeds ANSI/BIFMA standards. Patent Des. #381,823

### D. Deluxe Operational Chair

Seat has a 10° seat tilt with paddle lever. Backrest has paddle lever control for 22° backrest tilt and ergo knob adjustment for 5" backrest height. Seat cushion depth 2½". Assembly required.

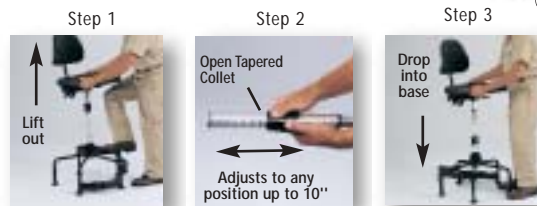
### E. Utility Operational Chair

Backrest has paddle lever control for 22° backrest tilt and ergo knob adjustment for 5" backrest height. Seat cushion depth 2½". Assembly required.

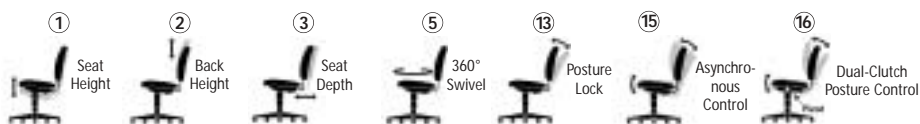
### F. Economy Operational Chair

Backrest has ergo knob adjustment controls for 3" backrest depth and 3" backrest height. Seat cushion depth 2". Assembly required.

Description	Black	Dia. x H	Seat W x D	Back W x H
D. Deluxe	5113	25 x 19 to 27"	18½ x 17"	15¾ x 12"
E. Utility	5111	25 x 19 to 27"	18½ x 17"	14½ x 9"
F. Economy	5110	25 x 19 to 27"	16¼ x 16¼"	14½ x 9"



All Task Master® seating is backed by the best warranty in the industry. The warranty guarantees against mechanical or structural failure due to defective material or workmanship for up to 15 years. This warranty will not be devalued if chairs are used more than 8 hours per day.



## Diesel™ Series Industrial Stools

Industrial strength steel frame with a contemporary clear coat Pewter finish. Nylon-coated screw lift manually adjusts seat height. Black vinyl padded 14" dia. seat rotates 360°. No-mar rubber feet keep stools in place.

### A. Industrial Stool with Back

Large back with Black leather pad. Available in High Base with ergonomic footrest or Low Base styles.

Black	Overall W x D x H	Seat Dia.	Back W x H
6664	21 x 21 x 35½ to 40½ "	14"	12 x 7"
6668	21 x 21 x 29½ to 35½ "	14"	12 x 7"

### B. Backless Industrial Stool

Available in High Base with ergonomic footrest or Low Base styles.

Black	Overall W x D x H	Seat Dia.	Back W x H
6665	21 x 21 x 22½ to 28½ "	14"	--
6669	21 x 21 x 16 to 22"	14"	--

### C. Workspace® Economy Workbench Chair

Black micro-cellular, self-skinning polyurethane foam seat and back provide both comfort and durability. Seat height adjustment from 22" to 32". Backrest has ergo knobs to adjust backrest height and depth. 18" footrest easily adjusts to accommodate a variety of users. Durable 24" dia. steel base covered with Black nylon shell and nylon glides.

Black	Dia. x H	Seat W x D	Back W x H
6680	24 x 34 to 51½"	18 x 16½"	17 x 12"

### D. Task Master® Stand Alone

Height range of 24" to 35". Seat adjusts manually to 10 different positions at 1¼" intervals. Large contoured seat with lower back support and waterfall front. Manually adjustable spring suspension seat frame automatically tilts forward up to 15°. Heavy gauge wrap-around support with built-in footrest adds additional strength to the triangular heavy gauge steel tubular base and frame. Rubber anti-skid support feet give additional support to the frame. Black microcellular, self-skinning polyurethane seat with waterfall front. 1¾" seat cushion depth. Patent Pending

Black	Overall W x D x H	Seat W x D	Back W x H
5126	21 x 21 x 39"	14 x 13"	--

### E. Task Master® Adjustable Footrest

Height range of 5½" to 15" with 9 positions in 1¼" increments. Textured, anti-slip platform size is 20"W x 12"D and mounts at an 8° angle. Heavy gauge black tubular steel construction. Locks together with button tabs.

Black	Overall W x D x H
5124	20 x 12 x 5½ to 15"

### F. Task Master® Work Trolley

Metal tray keeps tools and parts within easy reach. Height adjusts from 16" to 21". Rolls easily with five 3" polyurethane casters (2 locking). One-piece dust cover protects the lift mechanism from dirt and dust.

Black	Metal Tray Dia.	Seat Dia.
5102	18"	16"



5

NEW!



5

B



5



C

1 2 5 13



D



E



F

# Hand Trucks



## A. Stow-Away® Hand Trucks

Lightweight aluminum frame for easy transport, yet still big enough to get the job done. This versatile, collapsible hand truck will fit neatly into small spaces for compact storage. The telescoping handle, retractable wheels and fold-up toe plate make it ideal for travelers, sales staff or small offices. 7" dia. solid rubber tires. Size collapsed is 19½ x 2¼ x 28½". Includes elastic cord for securing loads.

Model	Capacity	Tire Size	Size Extended	Toe Plate Size
			W x D x H	W x D
4062	275 lbs.	7" Dia.	19½ x 18 x 39"	19 x 11"
4052	275 lbs.	7" Dia.	19½ x 18 x 44"	19 x 15½"

## B. Hide-Away® Hand Truck

Features a collapsible handle and fold-up toe plate for compact storage. Lightweight aluminum frame with a 9"W x 14"D steel toe plate. 250 lb. weight capacity is suitable for most office uses. 6" dia. rubber tires on a steel hub.

Model	Capacity	Size Extended	Size Collapsed
		W x D x H	W x D x H
4061	250 lbs.	15½ x 16½ x 43½"	15½ x 8 x 28¾"

## C. 3-Way Convertible Hand Truck

Converts from a standard two-wheel truck to an extended shoe two-wheel truck to a four-wheel platform truck. Heavy-duty extruded aluminum frame is bolted together. The 15"W x 8"D steel shoe is guaranteed for 10 years. Two cast-aluminum wheels with molded-on solid rubber tires and two 4"H x 1½"D swivel casters for use with platform truck. Large 12"W x 29"D extended shoe folds down for oversized loads and serves as the handle for platform truck. Easy assembly. Natural aluminum with Red and Black accent stripes.

Model	Capacity lbs.	Tire Size	W x H
4074	500/2-wh; 600/4-wh	8 x 1⅝"	20¼ x 48"

## D. Continuous Handle SuperTruck™

Durable extruded aluminum frame is bolted together for extra strength. All-purpose cast aluminum wheels with molded-on solid rubber tires roll easily over any surface. Assembles quickly and easily. Natural aluminum color with Red and Black accent stripes and black hub caps. Lightweight.

Model	Capacity lbs.	Tire Size	W x H
4075	500 lbs.	8 x 1⅝"	17½ x 48"

## E. FoldAway™ Platform Trucks

Heavy-duty steel construction with a vinyl wrap-around protective bumper. The non-skid vinyl surface on the platform keeps loads in place. Four large rubber casters (two swivel). Folding handle for compact storage. Choice of two sizes. Tropic Sand baked enamel finish with Dark Brown vinyl trim.

Model	Capacity lbs.	Tire Size	W x D x H
4077	700 lbs.	4 x 1"	18⅝ x 33¾ x 28¾"
4078	900 lbs.	5 x 1½"	24 x 34 x 36"



## A. Convertible Hand Trucks

Easily convert from two-wheel hand truck to four-wheel platform truck. Available in 4087R standard version or 4086R heavy-duty models. Assembly required. Power Grasp Handle. Red powder coat finish.

Model	Capacity lbs.	Tire Size	W x H
4086R	500/2-wh; 600/4-wh	10 x 2 $\frac{3}{4}$ "	18 x 51"
4087R	300/2-wh; 400/4-wh	8 x 1 $\frac{3}{4}$ "	18 x 51"

## B. Continuous Handle Trucks

Ideal for one- or two-handed use. Choose from 4081R standard or 4092 heavy-duty models. Assembly required. Power Grasp Handle. Red powder coat finish.

Model	Capacity lbs.	Tire Size	W x H
4081R	300 lbs.	8 x 1 $\frac{3}{4}$ "	18 x 44"
4092	500 lbs.	10 x 2 $\frac{3}{4}$ "	18 x 44"

## C. Loop Handle Truck

Loop handle on back of frame allows easy control with just one hand. Solid rubber tires. Assembly required. Red powder coat finish.

Model	Capacity lbs.	Tire Size	W x H
4084R	500 lbs.	10 x 2 $\frac{3}{4}$ "	18 x 47"

## Tuff Truck™ Series Hand Trucks

### D. Tuff Truck™ Platform Truck

Solid, all-welded steel frame with large platform and anti-skid mat. 4" casters (two stationary and two swivel) provide easy maneuverability on any surface.  $\frac{3}{4}$ " wrap-around vinyl bumper protects doors and furniture from damage. Folding handle for easy storage. Strong, chip-resistant light Gray enamel finish with Black vinyl trim.

Model	Capacity lbs.	Tire Size	Platform Size
4072	400 lbs.	4"	29 x 18 $\frac{3}{4}$ "
4063	500 lbs.	4"	36 x 24"

### E./F. Tuff Truck™ Economy Hand Trucks

Heavy gauge tubular steel frame with welded joints for extra strength. 14" x 7" toe plate and 8" solid rubber wheels with ball bearings. Black baked enamel finish. Shipped fully assembled.

Model	Description	Capacity	Tire Size	W x D x H
E. 4069	Continuous Handle	400 lbs.	8"	19 $\frac{1}{2}$ x 14 $\frac{1}{2}$ x 45 $\frac{1}{2}$ "
F. 4071	P-Loop Handle	400 lbs.	8"	16 x 14 $\frac{3}{4}$ x 51 $\frac{1}{2}$ "

### G. Tuff Truck™ Convertible Hand Truck

Easily converts from a two wheeled hand truck to a four wheeled platform truck. Slide handle out of one set of tubes and into another.

Model	Capacity lbs.	Tire Size	W x D x H
4070	400 lbs./2 wheels 500 lbs./4 wheels	8"	18 $\frac{1}{2}$ x 12 x 52"

### H. Table Mover™

Easily transports folding tables by supporting one end in its cradle between two wheels. The opposite end of the table is held and steered by the user. Accommodates folding tables up to 12 feet long and 4 feet wide with table tops up to  $\frac{7}{8}$ " thick. Low center of gravity allows Table Mover to stand upright for loading. Symmetric design allows tables to be loaded in either direction. Non-scuffing wheels are safe for all surfaces. Patent Pending.

Model	Capacity lbs.	Wheel Size	W x D x H
5310	150 lbs.	5 x 1"	10 $\frac{1}{2}$ x 4 $\frac{3}{4}$ x 7 $\frac{1}{2}$ "

### I. Cabinet Mover

This pair of tough steel dollies makes it easy to move cabinets, files, furniture or other bulky and heavy objects. Thick steel frame is supported by 2 $\frac{1}{2}$ " swivel casters that allow maneuverability in tight areas. 1000 lb. maximum load capacity per set. The platforms center is recessed to secure furniture legs. Non-mar skid-resistant Yellow vinyl finish.

Model	Capacity lbs.	Wheel Size	W x D x H
5320	1000 lbs./Set	2 $\frac{1}{2}$ "	19 $\frac{7}{8}$ x 8 $\frac{1}{4}$ x 4 $\frac{1}{4}$ "



# Shelving



A

Two Shown



B

Safco's Industrial and Commercial Steel Shelving feature double-sided wedge action compression clips that distribute weight for ultimate load bearing capacity.

Two Shown

C

Starter Unit with two extra shelf packs and Add-on Unit.



## A. Commercial Steel Shelving

Box beam shelf design and double-sided compression clips support loads up to 350 lbs. per shelf (based on a 36"W x 12"D shelf evenly loaded). Shelves can be easily repositioned in one-inch increments. Post Kit includes four 75" high posts (must be ordered with each Shelf Pack). Durable Dark Gray finish. Assembly required.

Model	Description	# of Shelves	W x D
5265	Shelf Pack	5	36 x 12" Shelf
5266	Shelf Pack	5	36 x 18" Shelf
5267	Shelf Pack	5	36 x 24" Shelf
5268	Shelf Pack	6	36 x 12" Shelf
5269	Shelf Pack	6	36 x 18" Shelf
5270	Shelf Pack	6	36 x 24" Shelf
5271	Post Kit	--	4 x 1 7/8 x 75"

## B. Industrial Steel Shelving

Box beam shelf design and double-sided compression clips support loads up to 725 lbs. per shelf (based on a 36"W x 12"D shelf evenly loaded). Shelves lock in place but can be easily repositioned in one-inch increments. Six shelves per shelf pack. Post Kit includes four 85" high posts (must be ordered with each Shelf Pack) Durable Dark Gray finish. Assembly required.

Model	Description	# of Shelves	W x D
5250	Shelf Pack	6	36 x 12" Shelf
5251	Shelf Pack	6	48 x 12" Shelf
5252	Shelf Pack	6	36 x 18" Shelf
5253	Shelf Pack	6	48 x 18" Shelf
5254	Shelf Pack	6	36 x 24" Shelf
5255	Shelf Pack	6	48 x 24" Shelf
5256	Post Kit	--	4 3/4 x 2 5/8 x 85"

## C. Industrial Wire Shelving

Strong welded wire construction. Open wire design permits air circulation. Starter sets include four shelves that adjust in 1" increments and assemble in minutes without tools. Available in Black or Metallic Gray powder coat finish.

**Starter Unit** - Includes 4 shelves, 4 posts and snap-together clips.

Black	Metallic Gray	Shelf Capacity (Lbs.)*	W x D x H
5285BL	5285GR	1,250	36 x 18 x 72"
5291BL	5291GR	1,000	48 x 18 x 72"
5288BL	5288GR	1,000	36 x 24 x 72"
5294BL	5294GR	800	48 x 24 x 72"

**Add-On Unit** - Includes four shelves, two posts and snap-together clips.

Black	Metallic Gray	Shelf Capacity (Lbs.)*	W x D x H
5286BL	5286GR	1,250	36 x 18 x 72"
5292BL	5292GR	1,000	48 x 18 x 72"
5289BL	5289GR	1,000	36 x 24 x 72"
5295BL	5295GR	800	48 x 24 x 72"

**Extra Shelves** - For Industrial Wire Shelving. Sold in packs of two.

Black	Metallic Gray	Shelf Capacity (Lbs.)*	W x D x H
5287BL	5287GR	1,250	36 x 18 x 1 1/2"
5293BL	5293GR	1,000	48 x 18 x 1 1/2"
5290BL	5290GR	1,000	36 x 24 x 1 1/2"
5296BL	5296GR	800	48 x 24 x 1 1/2"

\* Shelf capacity determined with weight evenly distributed.



## A. Archival Shelving

For trouble-free storage and retrieval of inactive files that need to be retained for future reference or tax purposes. Heavy-gauge steel frame easily locks together without tools. Warp-free particle board shelves provide maximum strength to support heavy loads. Supports up to 900 lbs. per shelf. Designed to hold up to eighty 12"W x 15"D x 10"H letter/legal archival storage boxes. **Steel Pack and Particleboard Shelves are shipped separately- ORDER BOTH.** Storage boxes not included.

Model	Description	Shelf Capacity (lbs.)*	W x D x H
5260	Steel Pack	--	69 x 32 $\frac{7}{8}$ x 84"
5261	Shelves	900	69 x 32 $\frac{7}{8}$ x $\frac{1}{2}$ "



A

## B. Boltless Steel Shelving

Flexible design allows two different set-ups - as a 5-shelf 72" high storage unit or as a 36" high workbench. Available in 36" and 48" widths. Unique construction requires no nuts or bolts and assembles in minutes without tools. Durable powder coat finish in Black.

Model	Description	Shelf Capacity (lbs.)*	W x D x H
5245BL	36"W Shelving Unit	1000	36 x 18 x 72"
5246BL	48"W Shelving Unit	800	48 x 18 x 72"



B

## C. Steel Lockers

Strong one-piece uni-body design, heavy-gauge all steel construction. Units can be used as stand-alone or can be linked together. Louvered door for ventilation. Recessed handle with padlock provision has no protruding parts. Users provide their own padlock for maximum security. Tropic Sand baked enamel finish. Lockers come fully assembled.

### Single Tier Locker

Single lockable door with large interior space, coat rod and hat shelf at top. Three-point positive latching for security.

Model	W x D x H
5515TS	12 x 18 x 78"

### Double Tier Locker

Two lockable doors, each with interior space of 12"W x 17"D x 35 $\frac{1}{2}$ "H and coat rod.

Model	W x D x H
5517TS	12 x 18 x 78"

### Box Locker

Six individual lockable doors, each with interior space of 12"W x 17"D x 11"H.

Model	W x D x H
5521TS	12 x 18 x 78"



C

\*Shelf capacity determined with weight evenly distributed.

Single Tier  
Locker

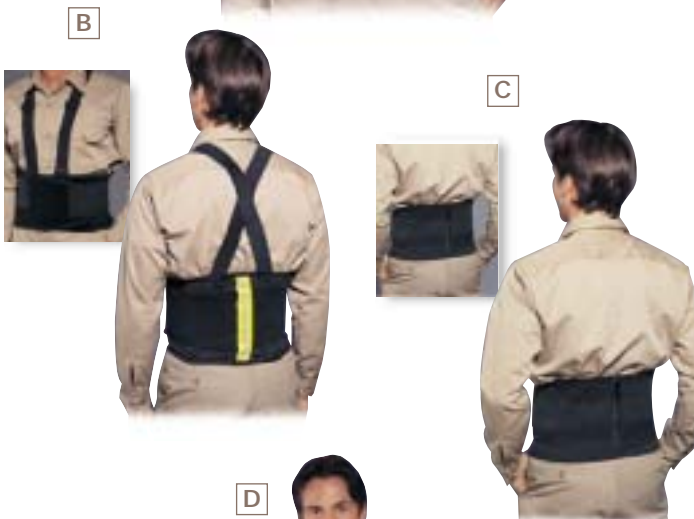
Double Tier  
Locker

Box  
Locker

# Safety Apparel



Also in Standard style.



Fluorescent Orange.



Fluorescent Orange with 3M Scotchlite™ Reflective Stripe.



Fluorescent Lime Green.



E



## Remedease™ Back Support Belts

Help promote healthy lifting. Back Support Belts provide lower back and abdominal support, encourage correct posture and act as a reminder to lift properly. Available in Deluxe, Reflective, Standard and Strapless styles. Available in 5 sizes: Small, Medium, Large, XLarge and 2X-3XLarge to ensure a proper fit.

### A. Deluxe Back Belts

Seven rigid stays and grip elastic for bilateral support and snug fit. 9" wide Lycra® mesh body with hook & loop closure. 4" woven elastic cinching closure. Nylon tape retainers and reinforced closure tabs on cinch strap. Removable, adjustable suspenders. Black. 10 per carton.

	Small	Med.	Lg.	XLg.	2X-3XLg.
Model #	76011	76021	76031	76041	76051
Fits Waist Size:	24 - 30"	30 - 36"	36 - 42"	42 - 48"	48 - 60"

### Standard Back Belts (not shown)

Seven rigid stays and grip elastic for bilateral support and snug fit. 8" wide Lycra® mesh body with hook & loop closure. 4" woven elastic cinching closure. Adjustable non-removable suspenders. Reinforced seams and edging. Black. 10 per carton.

	Small	Med.	Lg.	XLg.	2X-3XLg.
Model #	75011	75021	75031	75041	75051
Fits Waist Size:	24 - 30"	30 - 36"	36 - 42"	42 - 48"	48 - 60"

### B. Reflective Back Belts

Features 5 rigid stays and grip elastic for bilateral support and adjustable suspenders that are not removable. 8" wide Lycra® mesh body. Reflective silver stripe in the center back increases night visibility. Black/Silver. 10 per carton.

	Small	Med.	Lg.	XLg.	2X-3XLg.
Model #	75018	75028	75038	75048	75058
Fits Waist Size:	24 - 30"	30 - 36"	36 - 42"	42 - 48"	48 - 60"

### C. Strapless Back Support Belts

8" wide elastic. Hook & loop closure. 5" wide woven elastic cinch closure. One well-positioned stay for bilateral support in center back. Black. 10 per carton.

	Small	Med.	Lg.	XLg.	2X-3XLg.
Model #	75015	75025	75035	75045	75055
Fits Waist Size:	24 - 30"	30 - 36"	36 - 42"	42 - 48"	48 - 60"

### D. Safety Vests

Fluorescent Orange or Lime Green breathable polyester mesh resists mold and mildew. Orange vests are available with reflective stripes. Front Velcro® closure. Choose from Reflexite™ (for high visibility) or Scotchlite™ (accented with extra 1/2" silver reflective stripe for night vision.) 20"W x 48"L. One size fits most. 10 per carton.

Model	Color
87000	Fluorescent Orange
87001	Fluorescent Orange with 3M Scotchlite™ Reflective Stripe
87002	Fluorescent Orange with Reflexite™ Reflective Stripe
87050	Fluorescent Lime Green

### E. Utility Vests

International orange vests accented with 3M Scotchlite™ reflective trim are easily seen. Durable, lightweight vinyl coated nylon is highly waterproof. Reinforced seams and edges. Heavy duty front zipper closure. Two front pockets. For correct size, measure over street clothes. 10 per carton.

	Small	Med.	Lg.	XLg.	2X-3XLg.
Model #	87013	87014	87015	87016	87017
Fits Chest Size:	35 - 40"	40 - 45"	45 - 50"	50 - 55"	55 - 68"

# Bins & Boxes

## A. Nylon Apron

Full front splash protection when you need extra coverage. Highly waterproof. Rugged polyurethane coated nylon is flame retardant and resists many chemicals. Reinforced ties at neck and waist. 10 per carton.

Model	Color	Size
85021	Yellow	Adult A 27"W x 36"L
85022	Yellow	Adult B 35"W x 45"L

## B. Utility Apron

Workshop, lab, and warehouse standard for everyday wear. Nylon apron with two utility pockets. Reinforced neck and waist ties. 10 per carton.

Model	Color	Size
85011	Black	Adult A 27"W x 36"L
85012	Black	Adult B 35"W x 45"L

## C. Nitrile Apron

Nitrile-coated cotton/poly substrate handles most acids, hydrocarbons and oils. Tear resistant. Reinforced neck and waist ties. 10 per carton.

Model	Color	Size
85031	Yellow	Adult A 27"W x 36"L
85032	Yellow	Adult B 35"W x 45"L

## D. Corrugated Bins and Cartons

Constructed of EC32 specification corrugated fiberboard. Step down sides give easy access. Hanging notch allows bins to hang from lip of shelf. Crisp white finish with label area and printed inventory control chart provides easy reference. Bin Dividers and Bantam Inserts allow you to store multiple small parts in the same bin.

Model	W x D x H	Ctn. Qty:
<b>9-Inch Bin</b>		48
425148	2 x 9 x 4"	
425348	4 x 9 x 4"	
425448	6 x 9 x 4"	

Model	W x D x H	Ctn. Qty:
<b>12-Inch Bin</b>		48
435148	2 x 12 x 4"	
435248	3 x 12 x 4"	
435348	4 x 12 x 4"	
435448	6 x 12 x 4"	
435548	8 x 12 x 4"	
435848	9 x 12 x 4"	
435648	10 x 12 x 4"	
435748	12 x 12 x 4"	

Model	W x D x H	Ctn. Qty:
<b>18-Inch Bin</b>		48
445148	2 x 18 x 4"	
445348	4 x 18 x 4"	
445448	6 x 18 x 4"	
445548	8 x 18 x 4"	
445648	10 x 18 x 4"	
445748	12 x 18 x 4"	

Model	W x D x H	Ctn. Qty:
<b>24-Inch Bin</b>		48
446348	4 x 24 x 4"	
446448	6 x 24 x 4"	
446548	8 x 24 x 4"	

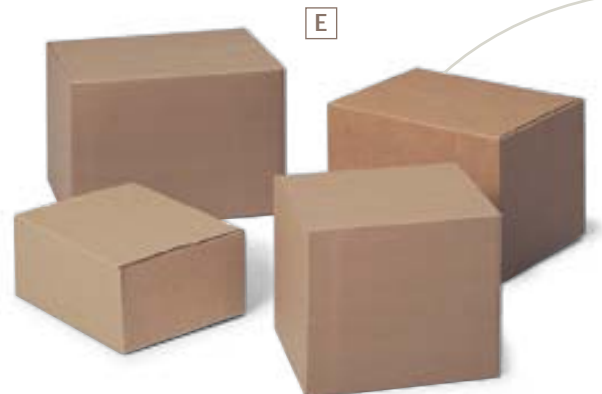
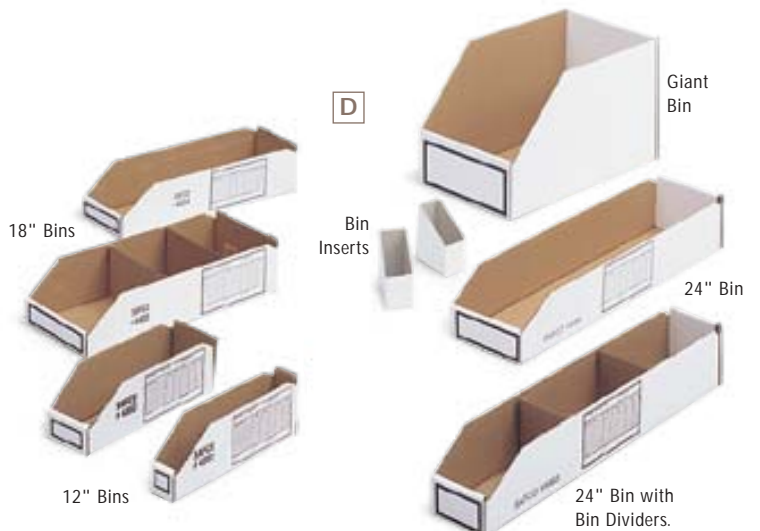
Model	W x D x H	Ctn. Qty:
<b>Bin Assortment</b>		100
	15 ea. of 4351,	
4350	4355, 4356, 4357,	
	20 ea. of 4353, 4354	

Model	W x D x H	Ctn. Qty:
<b>Giant Bin Boxes</b>		25
4503	7 $\frac{3}{4}$ x 17 $\frac{1}{2}$ x 10"	
4504	9 $\frac{3}{4}$ x 17 $\frac{1}{2}$ x 10"	
4505	11 $\frac{3}{4}$ x 17 $\frac{1}{2}$ x 10"	
4506	11 $\frac{3}{4}$ x 23 $\frac{1}{2}$ x 12"	
4507	15 $\frac{3}{4}$ x 23 $\frac{1}{2}$ x 12"	

Model	W x D x H	Ctn. Qty:
<b>Bin Dividers</b>		100
4551	Fits all 2-inch wide bins	
4552	Fits all 3-inch wide bins	
4553	Fits all 4-inch wide bins	
4554	Fits all 6-inch wide bins	
4555	Fits all 8-inch wide bins	
4556	Fits all 10-inch wide bins	
4557	Fits all 12-inch wide bins	

Model	W x D x H	Ctn. Qty:
<b>Bin Inserts</b>		100
4562	2 x 3 $\frac{1}{4}$ x 4"	

All Aprons available in two lengths.



## E. Corrugated Shipping Cartons

Strong corrugated kraft meets EC32 specifications. Assembles with shipping tape (not included).

Model	W x D x H	Ctn. Qty.
4025	11 x 9 x 9"	25
4026	11 $\frac{3}{4}$ x 8 $\frac{3}{4}$ x 4 $\frac{3}{4}$ "	25
4027	13 $\frac{3}{4}$ x 10 $\frac{1}{4}$ x 9"	25
4028	14 x 14 x 10"	20
4029	15 x 12 x 10"	20
4030	18 x 12 x 12"	20



# Fiberglass Receptacles



All Medallion receptacles are available in 3 in-stock colors, 27 special order colors and an infinite array of custom colors. Color chart available.



## Medallion Collection® Fiberglass Receptacles

Medallion Receptacles are built to commercial standards using high-density fiberglass and the hardest gel coat finish available. Medallion's common base system with specialized lids provides the opportunity to mix and match colors.

### Round Two-Piece Receptacle

**A. Round Base** - Rugged fiberglass receptacle includes closed bottom base and heavy-duty plastic liner. Dedicated lids keep service area neat. 20-gallon capacity.

**B. Waste Lid** - with 12" opening to form a complete waste sorting system.

**C. Can Lid** - with 5" center hole. Includes recycling labels.

**D. Paper Lid** - with 11½ x 2¾" slot. Includes recycling labels.

**E. Side Fill Lid** - with 4¾ x 11" opening.

**F. Side Fill Lid/Sand Ring** - with x 11"W x 4¾"H side opening. Black anodized aluminum ash urn for convenient cigarette disposal.

Description	Gray	Charcoal	Almond	Dia. x H
A. Round Base	9505GR	9505CH	9505AL	18 x 26½"
B. Waste Lid	9520GR	9520CH	9520AL	18 x 4½"
C. Can Lid	9521GR	9521CH	9521AL	18 x 4½"
D. Paper Lid	9522GR	9522CH	9522AL	18 x 4½"
E. Side Fill Lid	9523GR	9523CH	9523AL	18 x 11"
F. Side Fill Lid/Sand Ring	9524GR	9524CH	9524AL	18 x 11"

### Square Two-Piece Receptacle

**G. Square Base** - High capacity 33-gallon fiberglass receptacles with closed base and plastic liner are ideal for cafeterias, lunchrooms and large common areas. Two side openings measure 13½"W x 7¼"H.

**H. Flat Top Lid**

**I. Ash Urn Lid** - 14½" Dia. Black anodized Sand Ring.

**J. Recessed Food Tray Lid**

Description	Gray	Charcoal	Almond	W x D x H
G. Square Base	9555GR	9555CH	9555AL	20 x 20 x 36½"
H. Flat Top Lid	9570GR	9570CH	9570AL	20 x 20 x 3½"
I. Ash Urn Lid	9571GR	9571CH	9571AL	20 x 20 x 3½"
J. Recessed Food Tray Lid	9572GR	9572CH	9572AL	20 x 20 x 3½"

### One-Piece Receptacles & Urns

**K. 12-Gallon Ash Urn/Receptacle** - Offers the space-saving convenience of a waste receptacle and ash urn in one unit. Twelve-inch diameter urn. Molded edge protection on 7"W x 5¾"H side opening. Open bottom.

**L. 15-Gallon One-Piece Receptacle** - Opens on the bottom. Base housing lifts off to reveal a separate plastic liner. Generous 11" wide top opening. Vinyl edge guard protection.

**M. 20-Gallon One-Piece Receptacle** - Opens on the bottom. Base housing lifts off to reveal a separate plastic liner. 11" top opening.

Description	Gray	Charcoal	Almond	Dia. x H
K. 12 Gallon Ash Urn	9502GR	9502CH	9502AL	12 x 24¾"
L. 15-Gallon On-Piece	9503GR	9503CH	9503AL	16 x 26"
M. 20-Gallon One Piece	9504GR	9504CH	9504AL	18 x 30"

# Designer Receptacles

## Reflections by Safco®

Crafted from the highest quality, puncture-resistant, fire-safe steel., this upscale collection fits perfectly into reception areas, lobbies, hallways or anywhere you want to create a lasting impression. Both practical and elegant, they solve the difficult problem of waste management. Recommended for indoor use only.

### A. Wastebasket/Umbrella Stand

Ideal for use as a wastebasket or umbrella stand. Rolled rim and double lock seams for durable long-life. 4 1/4 Gal. Capacity.

Brass	Brass/ Black	Chrome/ Black	Black/ Chrome	Dia. x H
9801	9804	9805	9807	10 x 15"

### B. Sand Fill Ash Urn

Urn is constructed of rust-resistant anodized aluminum for enhanced appearance over years of use. Ideal for lounges and smaller common areas.

Brass	Brass/ Black	Chrome/ Black	Black/ Chrome	Dia. x H
--	9832	9833	9835	10 x 20"

### C. Ash N' Trash Receptacles

The all-in-one convenience of an ash urn and waste collector. Durable galvanized liner and lift-off top for easy access and emptying. Ash urns are rust-resistant anodized aluminum. Models 9847 - 9850 are 3-Gal. Capacity. Models 9861 - 9864 are 12 Gal. Capacity.

Brass	Brass/ Black	Chrome/ Black	Black/ Chrome	Dia. x H
--	9847	9848	9850	10 x 25 3/4"
--	9861	9862	9864	15 x 32"

### D. Open Top Dome Receptacles

Classic "torpedo" design with 6" dome top has long been a popular choice. Open Top style offers drop-in convenience. Galvanized inner liner stands up to years of use. 15-Gal. Capacity.

All Brass	All Chrome	Brass/ Black	Chrome/ Black	Black/ Chrome	Dia. x H
9874	9875	9870	9871	9873	15 x 37"

### E. Push Top Dome Receptacles

Spring-loaded, self-closing door keeps in odors while hiding refuse from view. Galvanized inner liner included.

All Brass	All Chrome	Brass/ Black	Chrome/ Black	Black/ Chrome	Dia. x H
9883	9884	9879	9880	9882	15 x 37"

### F. Push Top Receptacles

Self-closing doors hide refuse from view while trapping unpleasant odors inside. Designed to extinguish a fire in less than one minute. Includes color coordinated vinyl bumper tops and no-mar polyethylene feet. Base features corner hooks for attaching bag liners; optional rigid plastic liner available (see page 17).

Black/ Chrome	Plastic Liner	Capacity Gal.	Receptacle W x D x H
9893	9668	21	14 x 14 x 37 1/2"
9895	9669	36	18 x 18 x 37 1/2"

### G. Open Top Receptacle

Bright Brass or Chrome receptacle will enhance your office, lobby, reception room or conference center; anywhere appearance is important. Unique hoop ring design secures the trash bag inside the receptacle and eliminates the need for rigid plastic or galvanized liners. Separate lift off lid with 8 1/2" opening for easy disposal of waste. Large 35 Gallon capacity is ideal for high traffic areas.

Chrome	Description	Capacity Gal.	Dia. x H
9695	Chrome	35	18 x 29 1/2"
9697	Brass	35	18 x 29 1/2"



Available in 4 in-stock finishes, 6 special order colors: Dark Blue, Hunter Green, Garnet, Teal, Calypso, Cinnamon and an infinite number of custom colors.



# Indoor/Outdoor Receptacles



A

F

H

G

E



K

I

## Trophy Collection® Receptacles

Trophy Collection® Plastic Receptacles are at home in your first impression areas inside or outside your facility. They're ideal for shopping malls, lobbies, building entrances, parks and recreation areas.

Each unit is crafted of recycled post-consumer, high-density polyethylene to withstand extreme weather conditions. Patented Grab Bag® system holds liner bags in place and out of sight. Units are fully adaptable for anchoring and weighting devices to prevent vandalism and theft.

This collections brings you durability, style and selection at an affordable price.

### Outdoor Series

#### Aggregate Panel Outdoor Receptacles

Striking molded-in stone aggregate design adds beauty and serviceability to your "first impression" areas. Top Opening on model 9782 is 8" square. Side Opening on models 9786 and 9787 is 13"W x 6"H and on model 9788 is 9½"W x 4½"H. Textured Black finish with Black/Ivory aggregate panels. Ash Urn style features a 10" square stainless steel ash urn built into the lid (no sand required).

Aggregate	Capacity	Description	W x D x H
A. 9782	38 Gal.	Top Opening	18 x 18 x 30¼"
B. 9786	38 Gal.	Side Opening	18 x 18 x 39¼"
C. 9788	15 Gal.	Side Opening w/Urn	13¼ x 13¼ x 32½"
D. 9787	38 Gal.	Side Opening w/Urn	18 x 18 x 39"

#### Recessed Panel Outdoor Receptacles

Available in Top Opening style with an 8" square waste opening; Side Opening on models 9785BL and 9784BL is 13"W x 6"H and on model 9783 is 9½"W x 4½"H, opening on all four sides. Textured Black finish. Ash Urn style features a 10" square stainless steel ash urn built into the lid (no sand required).

Black	Capacity	Description	W x D x H
E. 9780BL	38 Gal.	Top Opening	18 x 18 x 30¼"
F. 9785BL	38 Gal.	Side Opening	18 x 18 x 39¼"
G. 9783BL	15 Gal.	Side Opening w/Urn	13¼ x 13¼ x 32½"
H. 9784BL	38 Gal.	Side Opening w/Urn	18 x 18 x 39"

### Indoor/Outdoor Series

#### I./J. Hexagon Indoor/Outdoor Receptacles

Attractive hexagon design with telescopic lid and an 11½" waste opening. Available in 30- or 45-gallon capacity. Textured Black finish.

Black	Capacity	Description	W x D x H
I. 9773BL	30 Gal.	Hexagon	20 x 17 x 29½"
J. 9774BL	45 Gal.	Hexagon	25½ x 22 x 31"

#### K./L. Ribbed Indoor/Outdoor Receptacles

Stylish ribbed design enhances any indoor or outdoor environment. Large 38-gallon capacity. Waste opening measures 11½" (9776GR), or 8" (9775GR). Textured Gray finish.

Black	Capacity	Description	W x D x H
K. 9775GR	38 Gal.	Vertical Ribbed	18 x 18 x 30¼"
L. 9776GR	38 Gal.	Horizontal Ribbed	18 x 18 x 33"

**Patented Grab Bag System® holds plastic liner in place to eliminate slippage.**



*Slip bag over base.*



*Tuck bag into openings on opposite sides.*



*Pull bag up through "teeth."*



*Secured waste bag.*



## Smoker Receptacles

First impression can easily be compromised by littered cigarette butts. These safe, attractive units provide the perfect solution for the disposal of smoking items and litter at any smoking-permitted area.

Smoker Mate™ and Smoker Dome® models keep the elements out while allowing smokers to conveniently and neatly extinguish cigarettes or cigars. The Economy Ash and Ash 'N Trash units are perfect for indoor use.

### A. Smoker Dome®

The ultimate in versatility — a receptacle that extinguishes cigarettes while hiding them from view, plus a 12-gallon waste receptacle all in one. The dome-shaped top is constructed of 22-gauge steel with a 6" diameter opening that's shielded by an aluminum butt striker. Enclosed two-gallon capacity urn does not require sand. 12-gallon capacity waste receptacle with a 10"W x 5"D side opening features a rugged galvanized liner.

Black	Sand	Capacity	Dia. x H
9778BL	9778SA	12 Gal.	16 x 39½"

### B. Smoker Mate™ Ash Urn

Features an enclosed bin with recessed opening for disposal of cigarette butts. Recessed design protects contents from the elements and discourages disposal of paper. Stainless steel construction. Sand is not required. Mounting hardware not included.

Stainless	Capacity	W x D x H
9674SS	--	10 x 3 x 15¼"

### C. Smoker Mate™ Ash Urn Stand

Heavy-duty zinc-plated stand features an extra-large footprint base suitable for attaching to any hard surface or the base can be buried for a more refined look. Hardware included.

Galvanized	Capacity	W x D x H
9673	--	13½ x 8 x 52"

### D-E. Economy Ash & Ash 'N Trash Urns

Durable heavy-gauge steel body topped with an anodized aluminum sand urn. Choose Ash Urn or Ash 'N Trash receptacle with galvanized liner. Sand not included.

Black	Capacity	Dia. x H
D. 9698BL	--	10⅞ x 20"
E. 9699BL	3 Gal.	10⅞ x 25½"

### F. Medallion Collection® 12-Gallon Ash Urn/Receptacle

Built to commercial standards using high-density fiberglass and the hardest gel coat finish available. This compact receptacle offers space-saving convenience of a waste receptacle and ash urn in one unit. Twelve-inch diameter urn. Molded edge protection on 7"W x 5¾"H side opening. Open bottom.

Gray	Charcoal	Almond	Dia. x H
9502GR	9502CH	9502AL	12 x 24¾"

### G. Reflections Ash N' Trash Receptacles

The all-in-one convenience of an ash urn and waste collector. Quality rolled steel construction with durable galvanized liner and lift-off top for easy access and emptying. Ash urns are rust-resistant anodized aluminum. Models 9847 - 9850 are 3-Gal. Capacity. Models 9861 - 9864 are 12 Gal. Capacity.

Brass	Brass/ Black	Chrome/ Black	Black/ Chrome	Dia. x H
--	9847	9848	9850	10 x 25¾"
--	9861	9862	9864	15 x 32"



B



D

E

C



F

G

# Waste Receptacles



## Round Wastebaskets

Puncture-resistant, solid-ribbed steel construction with rolled wire rim tops will not burn, melt or emit toxic fumes. Bottom is recessed 1" to provide air cushion insulation in the event of fire. All units meet OSHA requirements for waste receptacles and qualify under NFPA Life Safety Code 101, Section 31. Model 9604 is UL Classified. Powder coat finish. Model 9604 packed 6 per carton, 9606 and 9610 packed 3 per carton.

### A. 23.5 Quart Capacity

Black	Charcoal	Sand	Dia. x H
9604BL	9604CH	9604SA	13" x 14"

### B. 80 Quart Capacity

Charcoal	Sand	Dia. x H
9610CH	9610SA	16" x 29 $\frac{1}{4}$ "

### C. Self-Closing Dome Lid

For 9610 wastebasket, packed 3 per carton.

Charcoal	Sand	Dia. x H
9609CH	9609SA	16" x 8"



## Square and Rectangular Wastebaskets

Puncture-resistant, fire-safe, heavy-duty steel construction will not burn, melt or emit toxic fumes. Bottom is raised 1" to provide air cushion insulation in the event of fire. Color coordinated vinyl bumper tops and no-mar polyethylene feet protect furniture and floors. Units meet all OSHA requirements for waste receptacles and qualify under NFPA Life Safety Code 101, Section 31. Sizes range from 27.5 to 88 quarts. Powder coat finish.

### D. 31 Quart Capacity

Black	Sand	W x D x H
9612BL	9612SA	13 x 13 x 15 $\frac{1}{2}$ "

### E. 27.5 Quart Capacity

Black	Charcoal	Sand	Walnut	W x D x H
9616BL	9616CH	9616SA	9615WL	16 $\frac{1}{2}$ x 9 x 15"

### F. 88 Quart Capacity

Black	Charcoal	Sand	W x D x H
9618BL	9618CH	9618SA	20 $\frac{3}{4}$ x 11 x 29 $\frac{7}{8}$ "

## Dome Top Receptacles

### G. Open Dome Top

Same construction as model below, but with a stainless steel gasket rim around the 6" top opening for super-easy disposal. Ideal for hospitals, clinics, nursing homes or anywhere sanitary, hands-off disposal is required. Galvanized liner included.

Black	Putty	White	Capacity	Dia. x H
9639BL	9639PT	9639WH	15 Gal.	15 x 37"

### H. Dome Top with Push Door

Manufactured from top quality, fire-safe steel which will not burn, melt or emit toxic fumes. Wide stainless steel bottom edge is rolled under to protect floors. Galvanized steel liner included. Dome opening units feature a spring-loaded, self-closing stainless steel door to help contain odors. All units meet OSHA requirements for waste receptacles.

Black	Putty	White	Capacity	Dia. x H
9636BL	9636PT	9636WH	15 Gal.	15 x 37"

# Waste Receptacles

## Swing & Push Top Receptacles

Quality fire-safe steel construction. Base includes corner hooks for attaching bag liners, or choose an optional rigid plastic liner (listed below). Also includes no-mar nylon feet and matching color vinyl bumpers. Easy-to-maintain powder coat finishes or brushed Stainless Steel. Base and lid sold separately.

### A./B. Swing & Push Top Receptacle Base

Two sizes available: 21 Gal. measures 14"W x 14"D x 30"H; 36 Gal. measures 18"W x 18"D x 30"H.

	Capacity	Gray	Sand	White	Stainless Steel
A.	21 Gallon	9660GR	9660SA	9660WH	9656SS
B.	36 Gallon	9666GR	9666SA	9666WH	9663SS

### C./D. Swing Top Lid

Snug-fitting, single-pivot, self-closing doors hide unsightly refuse while keeping unpleasant odors inside. Lift-off two-way swing style lid allows easy access for emptying. Two sizes available: 21 Gal. measures 14"W x 14"D x 8<sup>1</sup>/<sub>8</sub>"H, and the 36 Gal. measures 18"W x 18"D x 9<sup>3</sup>/<sub>8</sub>"H.

	Capacity	Gray	Sand	White	Stainless Steel
C.	21 Gallon	9657GR	9657SA	9657WH	9654SS
D.	36 Gallon	9664GR	9664SA	9664WH	9661SS

### E./F. Push Top Lid

Snug-fitting, positive-action, self-closing doors hide unsightly refuse from view while keeping unpleasant odors inside. Lift-off two-way push style lid allows easy access for emptying. Two sizes available: 21 Gal. measures 14"W x 14"D x 8<sup>1</sup>/<sub>8</sub>"H, and the 36 Gal. measures 18"W x 18"D x 9<sup>3</sup>/<sub>8</sub>"H.

	Capacity	Gray	Sand	White	Stainless Steel
E.	21 Gallon	9658GR	9658SA	9658WH	9655SS
F.	36 Gallon	9665GR	9665SA	9665WH	9662SS

## Optional Rigid Plastic Liners

Available in 21- and 36-gal. capacity.

Model #	Capacity
9668	21 Gal.
9669	36 Gal.

## G./H. Wood Waste Receptacles

These receptacles will complement any commercial or office setting. Constructed of industrial grade compressed wood with a melamine finish. Front door access is ergonomically positioned for easy trash removal. Push door lid is reversible to display the words "Thank You" or, a natural finish door. Four polypropylene floor glides protect floor. Large capacity for high traffic areas. 36-gallon rigid plastic liner (required) is sold separately.

Description	Med. Oak	Gray	W x D x H
G. Flat Top	9728MO	9728GR	19 <sup>1</sup> / <sub>4</sub> x 18 <sup>3</sup> / <sub>4</sub> x 41 <sup>1</sup> / <sub>4</sub> "
H. Tray Top	9729MO	9729GR	19 <sup>1</sup> / <sub>4</sub> x 18 <sup>3</sup> / <sub>4</sub> x 44"
Plastic Liner		9669	36 Gal.

## I. Steel Security Receptacle

Fire-resistant heavy-gauge steel construction, hinged tops that swing back for easy emptying, and 2" high full-width opening. Available with locks and numbered keys. Units can be "same key sequence". Also includes fire-retardant nylon feet, vinyl bumper and corner hooks for easy bag liner attachment. Durable Putty powder coat finish.

Model	Capacity	W x D x H
9693PT	36 Gal.	18 x 18 x 37 <sup>1</sup> / <sub>2</sub> "



SWING TOP LID  
Single pivot, two-way push access.



Hanging Hooks secure liner bags completely inside Swing Top or Push Top unit.





# Recycling & Security



## A. - D. Public Square®

Contemporary steel collection includes four base sizes and three tops designed to segregate waste and recyclables. Order bases and lids separately.

Model	Color	Capacity	W x D x H
A. 2981GN	Green Base	25 gal.	15 1/4 x 15 1/4 x 26"
B. 2982BR	Brown Base	31 gal.	15 1/4 x 15 1/4 x 32"
C. 2983BG	Burgundy Base	37 gal.	15 1/4 x 15 1/4 x 38"
D. 2984BR	Brown Base	42 gal.	15 1/4 x 15 1/4 x 44"

**E. Slot Lid** - For newspaper and paper. Decals included.

**F. Round Lid** - For cans and glass. Decals included.

**G. Square Lid** - For plastic and waste. Decals included.

Description	Model	Color	W x D x H
E. Slot Lid	2987BL	Black	2 x 15" slot
F. Round Lid	2988BL	Black	4" Dia. opening
G. Square Lid	2989BL	Black	8" square opening

**Optional Lock Kit** - Field installed.

Model No. 2980



## H. Tall Round Recycling Receptacle

Puncture-resistant steel will not burn, melt or emit toxic fumes. Comes with lid and recycle decal. Meets all OSHA requirements.

Model	Color	Capacity	Dia. x H
9632BU	Blue	80 qts.	16" x 30"

## I. Paper Pitch

Create a recycling station at every desk. Hanging tabs design allows mounting on any square or rectangular wastebasket. Easy lift off and repositioning for maintenance staff. Polyethylene plastic. 12 per carton.

Model	Color	Capacity	W x D x H
2944BL	Black	7 qts.	10 1/4 x 6 1/4 x 9 3/4"



Bio-Hazard Label included.

## J./K. Round Step-On™ Receptacles

Fire-safe steel construction, with positive closing lid that impacts on two noise-reducing tips for a quieter close. Long wear slip proof 2 1/2" pedal. Biohazard label included. Meets OSHA Standard for Bloodborne Pathogens and NFPA Life Safety Code.

Model	Color	Capacity	W x D x H
J. 9681WH	White	4 gal.	11 1/2 x 16"
K. 9683WH	White	7 gal.	11 1/2 x 22"

Model #	Pg.	Model #	Pg.	Model #	Pg.	Model #	Pg.
2944	.18	4506	.11	75025	.10	9664	.17
2980	.18	4507	.11	75028	.10	9665	.17
2981	.18	4551	.11	75031	.10	9666	.17
2982	.18	4552	.11	75035	.10	9668	.13
2983	.18	4553	.11	75038	.10	9668	.17
2984	.18	4554	.11	75041	.10	9669	.13
2987	.18	4555	.11	75045	.10	9669	.17
2988	.18	4556	.11	75048	.10	9673	.15
2989	.18	4557	.11	75051	.10	9674	.15
4025	.11	4562	.11	75055	.10	9681	.18
4026	.11	5102	.5	75058	.10	9683	.18
4027	.11	5110	.4	76011	.10	9693	.17
4028	.11	5111	.4	76021	.10	9695	.13
4029	.11	5113	.4	76031	.10	9697	.13
4030	.11	5117	.4	76041	.10	9698	.15
4031	.11	5118	.4	76051	.10	9699	.15
4032	.11	5120	.4	85011	.11	9728	.17
4033	.11	5124	.5	85012	.11	9729	.17
4034	.11	5126	.5	85021	.11	9773	.14
4035	.11	5245	.9	85022	.11	9774	.14
4036	.11	5246	.9	85031	.11	9775	.14
4037	.11	5250	.8	85032	.11	9776	.14
4038	.11	5251	.8	87000	.10	9778	.15
4052	.6	5252	.8	87001	.10	9780	.14
4061	.6	5253	.8	87002	.10	9782	.14
4062	.6	5254	.8	87013	.10	9783	.14
4063	.7	5255	.8	87014	.10	9784	.14
4069	.7	5256	.8	87015	.10	9785	.14
4070	.7	5260	.9	87016	.10	9786	.14
4071	.7	5261	.9	87017	.10	9787	.14
4072	.7	5265	.8	87050	.10	9788	.14
4074	.6	5266	.8	9502	.12	9801	.13
4075	.6	5267	.8	9502	.15	9804	.13
4077	.6	5268	.8	9503	.12	9805	.13
4078	.6	5269	.8	9504	.12	9807	.13
4081	.7	5270	.8	9505	.12	9832	.13
4084	.7	5271	.8	9520	.12	9833	.13
4086	.7	5285	.8	9521	.12	9835	.13
4087	.7	5286	.8	9522	.12	9847	.13
4092	.7	5287	.8	9523	.12	9847	.15
425148	.11	5288	.8	9524	.12	9848	.13
425348	.11	5289	.8	9555	.12	9848	.15
425448	.11	5290	.8	9570	.12	9850	.13
435148	.11	5291	.8	9571	.12	9850	.15
435248	.11	5292	.8	9572	.12	9861	.13
435448	.11	5293	.8	9604	.16	9861	.15
435548	.11	5294	.8	9609	.16	9862	.13
435648	.11	5295	.8	9610	.16	9862	.15
435748	.11	5296	.8	9612	.16	9864	.13
435848	.11	5310	.7	9616	.16	9864	.15
445148	.11	5320	.7	9618	.16	9870	.13
445348	.11	5515	.9	9632	.18	9871	.13
445448	.11	5517	.9	9636	.16	9873	.13
445548	.11	5521	.9	9639	.16	9874	.13
445648	.11	6664	.5	9654	.17	9875	.13
445748	.11	6665	.5	9655	.17	9879	.13
446348	.11	6668	.5	9656	.17	9880	.13
446448	.11	6669	.5	9657	.17	9882	.13
446548	.11	6680	.5	9658	.17	9883	.13
4350	.11	75011	.10	9660	.17	9884	.13
4503	.11	75015	.10	9661	.17	9893	.13
4504	.11	75018	.10	9662	.17	9895	.13
4505	.11	75021	.10	9663	.17		

